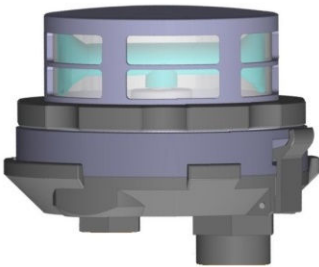


# Rotorflush RF100 Range Self-cleaning Filter

## General Specifications

### General Arrangements



*Above shows RF100IND-Q*



*Above shows RF100-Duplex*



*Above shows RF100-Triplex*

### Key Features

- Protects pumps, analyser cells, jets, solenoid valves etc. from blockage
- Self-cleaning, so maintenance is minimal
- Low space requirement
- Robust construction
- Reliable and economical
- Fine filtration to 60 microns
- Protects newts and tadpoles from becoming trapped or injured

# Rotorflush RF100 Range Self-cleaning Filter

## General Specifications

### Models and Specifications

Model	Max L/min	Water Supply
RF100-IND	30	Tapped from pump outlet
RF100-Duplex	60	Tapped from pump outlet
RF100-Triplex	90	Tapped from pump outlet

### Self-cleaning Filter Construction

Self-cleaning Filter Construction	
Standard Screen Sizes	60, 115, 250 micron
Filter mesh	nylon mesh in polypropylene cage
Filter Cage and lid	Acetal copolymer
Jets	Acetal copolymer
Body	ABS (Acrylonitrile Butadiene Styrene)

### Dimensions and Weights

Model	Height (mm)	Filter Diameter / Width (mm)	Weight (kg)	Pump Outlet (mm)	Backwash Outlet (mm)
RF100-IND	122	145	0.5	1 ¼" BSP Male	¾" BSP Male
RF100-Duplex	240	140	0.4	1 ¼" BSP Male	¾" BSP Male
RF100-Triplex	245	286	0.6	1 ¼" BSP Male	¾" BSP Male

\*Dimensions and weights are approximate

\*These models are available with US NPT Fittings

# Rotorflush RF100 Range Self-cleaning Filter

## General Specifications

