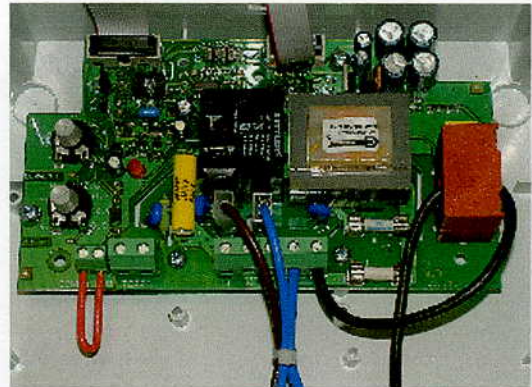


DOMINO PLUS ELECTRIC PANELS DRY CHECK



SPECIFICATIONS

- Key Pad micro processor setup and control
- Digital Fault Display
- Digital Current Voltage and $\cos \phi$ Display
- Rugged Thermoplastic housing IP 55
- Manual or Automatic control
- Dry running protection adjustable from $\cos \phi$ 0,1 to 0,9
- Automatic restoration of dry running protection adjustable from 5" to 90" for 4 attempts
- Very low voltage input for external pressure switch or float switch
- Adjustable current protection 2 - 18 Amp or 16 - 36 Amp
- Adjustable cut in time delay 5 min to 9 min
- Over-under voltage protection
- Auxiliary circuits protection fuse
- Motor protection fuse
- Supply Voltage Domino M 50/60Hz 230v +/-10%
- Supply Voltage Domino T 50/60Hz 400v +/-10%
- Power 0.37 kW to 15 kW
- Wall Mounted
- Output with cable glands

OPTIONAL ACCESSORIES

- Float switch
- Pressure Switch
- Alarm Systems

TECHNICAL DATA

Model	Code	Power at 400v		Operating Current Range	Weight kg	Dimensions mm
		HP	kW	Amp		
Domino Plus M	101.13	0.5 - 3	0.37 - 2.2	2 - 18	2	180 x 230 x 310
Domino Plus T 10	3.38	0.75 - 10	0.55- 7.5	2 - 15	2.5	180 x 230 x 310
Domino Plus T 15	3.39	10 - 15	7.5 - 11	16 - 24	3	180 x 230 x 310
Domino Plus T 20	3.40	10 - 20	7.5 - 15	16 - 32	3.5	180 x 230 x 310

SUPPLIED BY

Rotorflush Filters, Langmoor manor, Charmouth, Dorset, DT6 6BU
Tel 01297 560229, Fax 01297 560110
www.rotorflush.com Email: sales@rotorflush.com